



logitech 

G304 Gaming Mouse

User Guide





# SPECS & DETAILS

## DIMENSIONS

- Height: 116.6 mm
- Width: 62.15 mm
- Depth: 38.2 mm
- Weight: 99 g

## Responsiveness

- Wireless report rate: 1000Hz (1ms)
- Wireless technology: LIGHTSPEED
- Wireless Microprocessor: 32-bit ARM

## DURABILITY

PTFE Feet: 250-km range <sup>1</sup>



# TECHNICAL SPECIFICATIONS

## TRACKING

- **Sensor:** HERO™
- **Resolution:** 200 – 12,000 dpi
- Zero smoothing/acceleration/filtering
- **Max. acceleration:** 40 g <sub>2</sub>
- **Max. speed:** 400 IPS <sub>3</sub>

## In the Box

- G304 Gaming Mouse
- LIGHTSPEED™ USB receiver
- User documentation



Lightspeed™

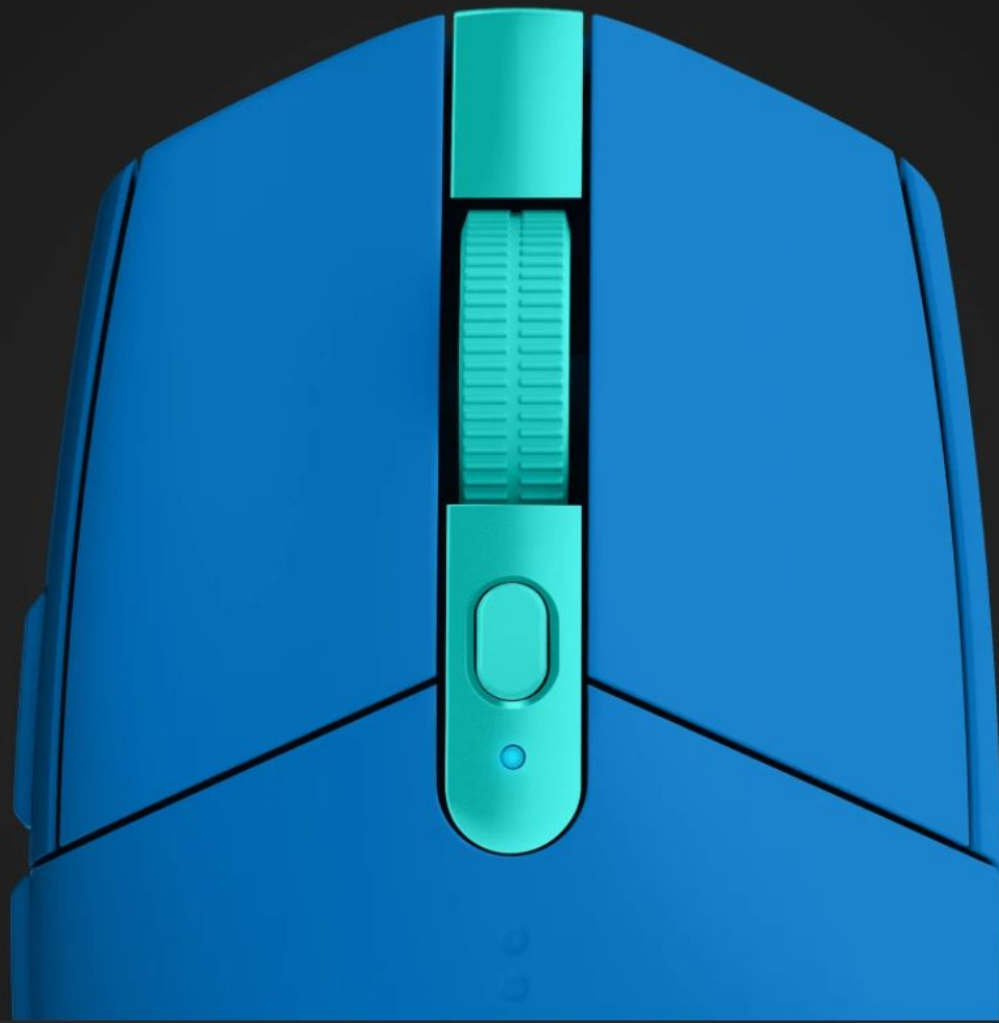
HERO™  
Sensor



Amazing  
Battery Life

Wonderfull  
Experience





## MECHANICAL BUTTON TENSIONING

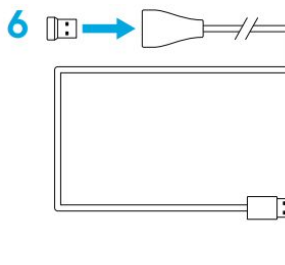
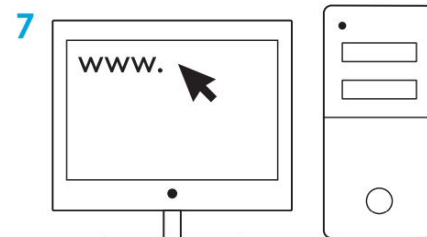
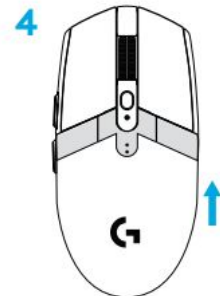
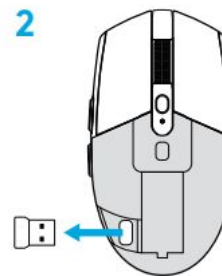
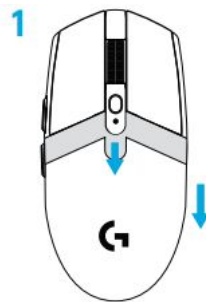
---

Mechanical button tensioning with separated buttons enhances the consistency of the left and right primary mouse buttons and helps reduce the force needed to click. This results in crisp, reliable button performance you can depend on in even the most intense gaming sessions.



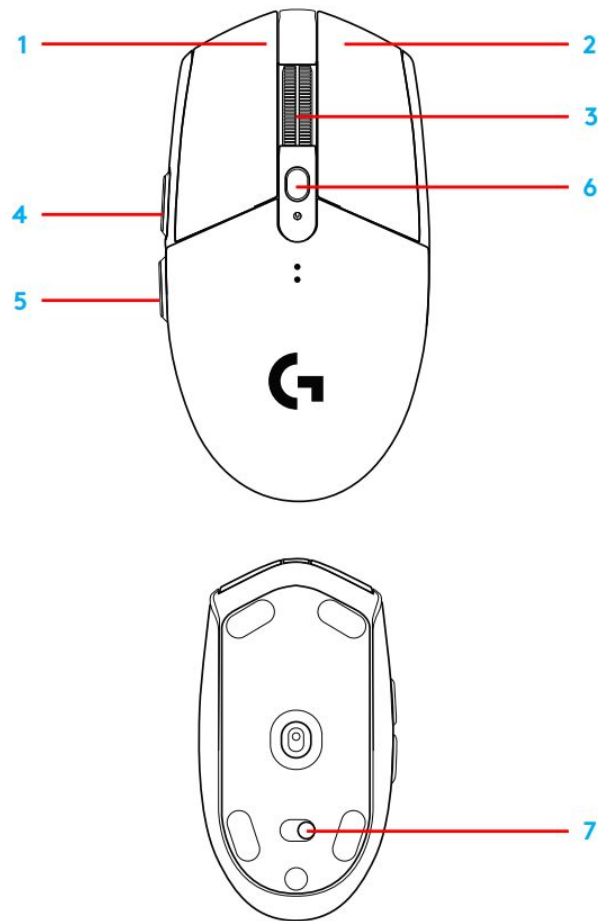
# SETUP INSTRUCTIONS

1. Remove the battery cover by pressing the top of the cover and pulling it downwards
2. Remove the receiver
3. Insert the battery
4. Close the battery cover
5. Make sure the mouse is turned on via the switch on the bottom of the mouse.
6. Recommended: Insert receiver into the receiver extension cable. Insert extension cable into your USB port. Alternatively, insert receiver directly into your USB port.
7. Download the G HUB software



# 6 FULLY PROGRAMMABLE BUTTONS

1. Left (Button 1)
2. Right (Button 2)
3. Wheel click (Button 3)
4. Forward (Button 4)
5. Back (Button 5)
6. DPI cycle (Button 6)
7. On/Off switch (bottom of mouse, not programmable)



# LED INDICATOR

## Battery life

**Flashing red:** battery <15%

## DPI

**Yellow:** step 1 - 400 DPI

**White:** step 2 - 800 DPI (default)

**Orange:** step 3 - 1600 DPI

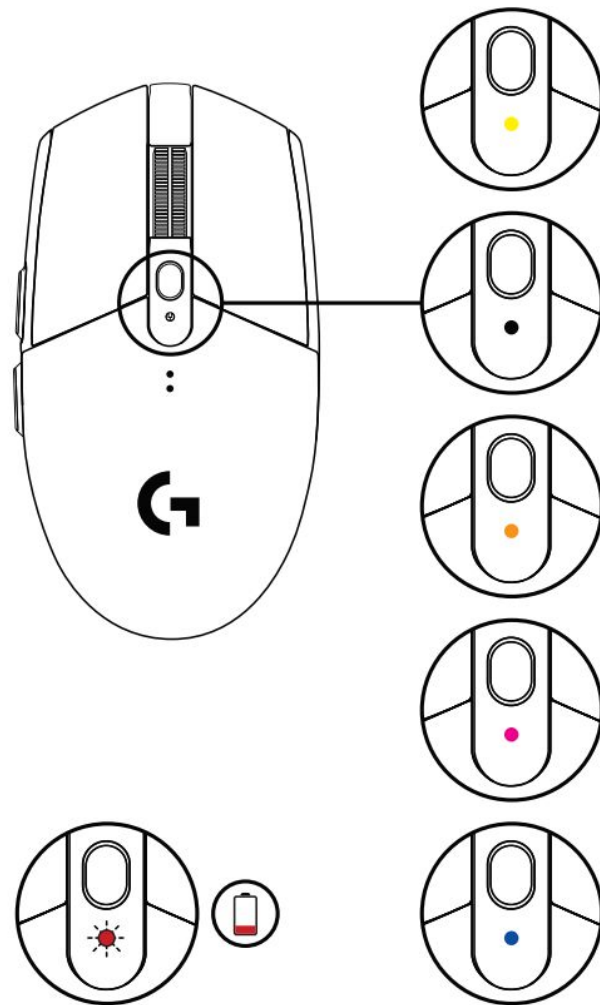
**Magenta:** step 4 - 3200 DPI

**Blue:** step 5 - 6400 DPI (Step 5 can be activated via software only)

## Mode

**Cyan:** performance mode (default)

**Green:** endurance mode (can be activated via software only)





## LIGHTSPEED WIRELESS

---

Through end-to-end engineering and design, Logitech G developed a robust wireless solution to solve the fundamental problems of latency, stability, and connectivity. The end result is LIGHTSPEED, a pro-grade wireless solution that achieves wired-like performance.



EXPAND LIGHTSPEED STORY



# FAQ

- **Q: Do i need to Charge the battery? if yes than how? what does it mean 250 hour battery life?**

**A:** One AAA BATTERY

One signal receiver

Usb cable included but it is usb extender cable for the receiver

- **Q: What is the range?**

**A:** Approximately 2 meters in Performance mode and in Regular/PowerSaver mode it is nearly 5 meters. I always keep it in Performance mode at distance of 1.5 from receiver with direct line of sight and works fine for me. Although your condition may vary due to exact distance, position and line of sight.





- **Q: Does it have also g hub detecting problem like g102?**

**A:** It would not have, but incase of any issues please call our Toll free customer care number mentioned on the product page of any Logitech product in Amazon.

- **Q: What is it's click span??**

**A:** It's been tested for 10 million clicks

